



PROLIANCE ENGINEERING AND CONSTRUCTION SOLUTIONS

FOR INFRASTRUCTURE-INTENSIVE INDUSTRIES, ENGINEERING AND CONSTRUCTION FIRMS ARE A CRITICAL RESOURCE TO THE SUCCESSFUL DELIVERY OF CAPITAL PROJECTS. TODAY'S ENGINEERING AND CONSTRUCTION FIRMS PROVIDE DAILY PLANNING, DESIGN, ENGINEERING, PROCUREMENT AND CONSTRUCTION SERVICES ON A WIDE RANGE OF PLANT, CIVIL, BUILDING AND OTHER INFRASTRUCTURE PROJECTS. MANAGING PROJECT SCOPE, BUDGETS AND SCHEDULES EFFECTIVELY IS PARAMOUNT TO THE SUCCESS OR FAILURE OF THESE SERVICE-ORIENTED BUSINESSES.

The Proliance® enterprise software solution manages the complete infrastructure lifecycle—from development and construction to maintenance and operations. Proliance is the only complete Infrastructure Lifecycle Management (ILM) solution that optimizes the plan, build and operate phases of physical assets.

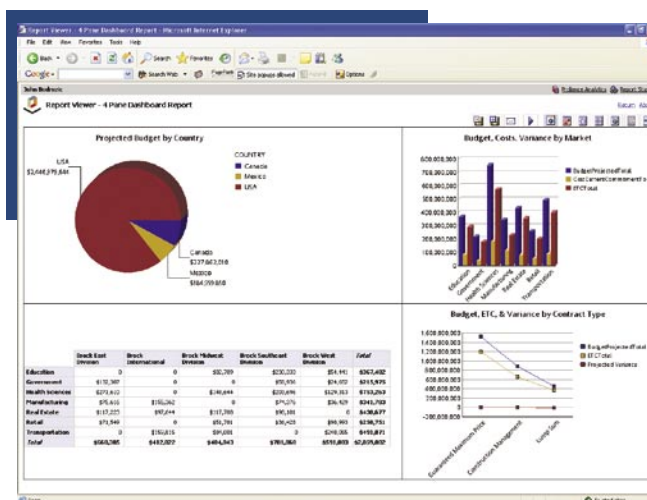
Powerful project and program management capabilities combined with facilities

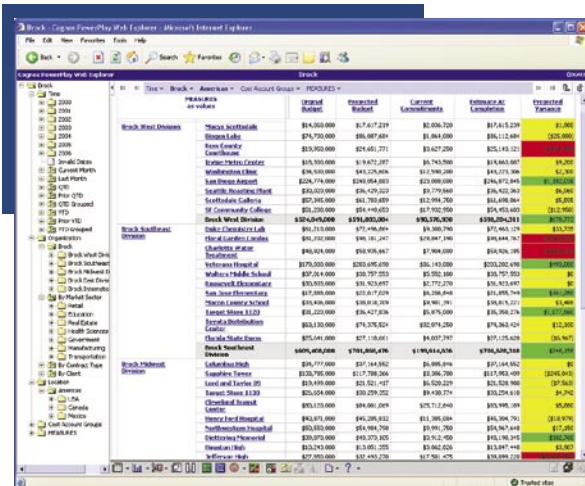
management applications allow organizations to deliver projects on time and on budget. Business intelligence and business process management features allow decision makers and executives to gain real-time, enterprise-wide visibility into the entire business including projects and programs by client, business unit and market region.

Extremely configurable and flexible, Proliance allows engineering and construction firms to establish one corporate process methodology for all projects, or to implement and maintain different process requirements by client or project.

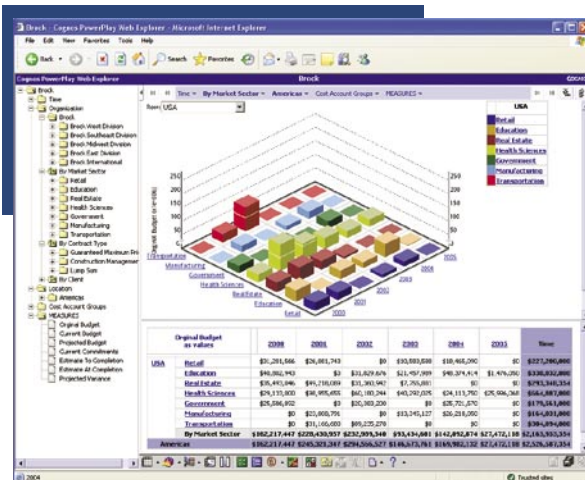
Project and program management, business process management, business intelligence, solution configurability and a Web services technology platform come together to make Proliance a great match for engineering and construction organizations.

SENIOR MANAGEMENT GAINS REAL-TIME OPERATIONAL VISIBILITY AND THE ABILITY TO ESTABLISH KEY PERFORMANCE INDICATORS FOR THE ENTIRE PORTFOLIO OF PROJECTS AND PROGRAMS.





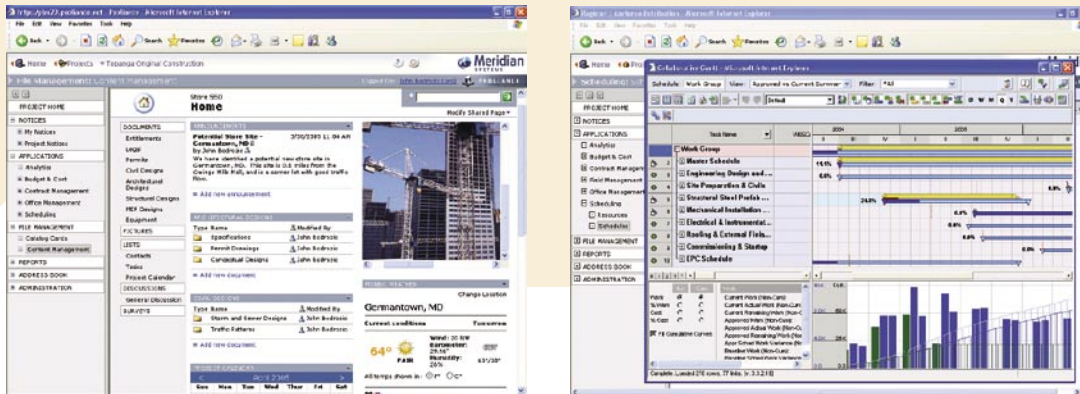
EXCEPTION-STYLE DASHBOARD REPORTS PROVIDE VISIBILITY INTO POORLY PERFORMING PROJECTS, ALLOWING MANAGEMENT TIME TO RESPOND WITH POSITIVE RECOVERY ACTIONS.



USING ADVANCED BUSINESS INTELLIGENCE CAPABILITIES, EXECUTIVES CAN ANALYZE TRENDS ACROSS THE ENTIRE COMPANY PORTFOLIO, YIELDING DATA FOR FUTURE STRATEGIC PLANNING EFFORTS.

BENEFITS

- › Reduce cycle times to design and build new facilities, providing greater value to your customers.
- › Manage and review budgets as they are being created and spent – with accurate views of forecasted costs and instant profit and loss projections.
- › Provide key customers with real-time visibility into project and program status.
- › Spot project and program performance issues early, allowing time for corrective action.
- › Analyze volume and profits by market segment, business unit and geography.
- › Control project risk and effectively manage claims with traceable audit trails for all project documents.
- › Decrease IT costs and increase project team efficiency by managing scopes, budgets, contracts, schedules, resources and journals in one enterprise application.
- › Improve collaboration by providing instant and secure access to all project data via the internet.
- › Centrally manage all projects and programs in one enterprise database, allowing corporate-wide trend analysis.
- › Automate and enforce best practices for processing information and create consistent data standards across an entire portfolio.



PROLIANCE SUPPORTS MULTIPLE ORGANIZATIONAL ROLES

Proliance supports project managers with robust functionality to manage budgets, schedules, costs, scopes of work and quality levels while also meeting the needs of the IT organization with a scalable and extendable technology architecture based on XML and Web services.

EXECUTIVE VISIBILITY

Proliance dashboards can map to any organizational structure to provide performance metrics by multiple business units, joint ventures, and several markets or client segments. With all operational project data in one system, company management can instantly view construction volume, profits, contingencies and projects at risk by market segment, business unit, contract delivery methods and by geographical location.

END USER PRODUCTIVITY

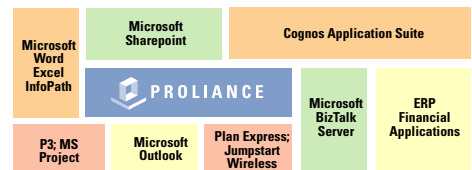
Proliance enables every operational team member to access the information relevant to managing their part of the project lifecycle.

- › *Business Development Managers:* Track a pipeline of potential projects with conceptual estimates and designs for projects.
- › *Pre-Construction Managers:* Create and manage multiple scope documents that go into building the original budget for projects and programs.
- › *Project Managers:* Manage the overall budget and all contractual commitments against the budget. Track all change management documents as well as invoices and payments.
- › *Project Engineers:* Manage project scope and communications including design drawings and specifications, submittals and approvals, and ongoing correspondence such as meeting minutes, RFIs and transmittals.
- › *Project Superintendents:* Manage the overall schedule of projects including tasks and resource assignments, daily project journals, and quality management via deficiency and punch lists.

IT ORGANIZATION

The IT organization can centrally store all project data in a single location, giving geographically distributed teams instant access to business intelligence reporting, and project and program information. Proliance provides a secure and extendable platform that integrates with financial systems and enables rich collaboration with clients and partners.

Customer Total Solution



THE OPEN ARCHITECTURE OF PROLIANCE ENABLES INTEGRATION WITH SEVERAL OTHER ENTERPRISE APPLICATION PLATFORMS, BUSINESS INTELLIGENCE SOLUTIONS AND ENTERPRISE CONTENT MANAGEMENT SOLUTIONS.

Meridian Professional Services and Meridian authorized technology partners have created a total customer solution that includes Microsoft BizTalk Server for accounting integrations, Cognos business intelligence applications, and Microsoft SharePoint for content and file management.

PROLIANCE FEATURES

- › **Pre-Construction Scopes:** Use multiple scope documents to develop and approve an original project budget, and process these documents via workflow. Allocate money from scope documents to various budget approval columns in an Anticipated Cost Report.
- › **Budget Management:** Manage all budget and cost items to determine whether a project is on track. Instantly roll up all financial transactions into an Anticipated Cost Report, and drill down into problem areas for corrective action.
- › **Contract Management:** Create and manage revenue contracts with clients, and expense contracts and purchase orders with subcontractors. Manage different types of contracts, including lump sum, unit price, pre-committed and auto-committed.

- › **Change Management:** Track cost events impacting contracts and budgets; manage their evolution into instructions to subcontractors, quotes from subcontractors, and official change orders.
- › **Invoice and Billing Management:** Track all subcontractor and vendor invoices—including quantities, stored materials, and retention.
- › **Scheduling:** Create, share, manage and update multiple schedules in one database—including the overall project schedule, and separate two-week look ahead schedules.
- › **Resource Assignments:** Break down schedules into a series of tasks with generic or specific resource assignments.
- › **Design Collaboration:** Manage, review, collaborate and distribute design drawings and submittals through multiple review cycles across teams of architects, engineers, subcontractors and owners.

- › **Correspondence Management:** Document all RFIs, Meeting Minutes, Transmittals and Correspondence through the entire project lifecycle.
- › **Daily Journal Management:** Track daily jobsite information such as weather, equipment, manpower, activities, visitors, etc.
- › **Quality Management:** Track all deficiencies and punch list items from multiple sources and assign to multiple parties and associated contracts.
- › **Management Planning:** Establish and enforce best practices to ensure all projects are managed consistently.
- › **File Management:** Upload, review and process unstructured data files—such as photos, CAD files and PDFs—and link to any other Proliance record. Integrate with Microsoft SharePoint for content management on every project.
- › **Vendor Management:** Easily maintain a corporate address book for all clients and vendors. Track multiple office locations, contacts, insurance documents, bonds, certifications, bid history and contract histories.
- › **Program Management:** Manage large-scale programs consisting of multiple projects, and perform analysis and rollups for budgets, contracts and schedules.
- › **Facilities Management:** Manage assets and work orders for your key clients where maintenance and operations services are part of your overall contract.

ACCESS A SUMMARY VIEW OF ALL BUDGET AND COST TRANSACTIONS; DRILL DOWN INTO THE DETAILS THROUGH HYPERLINKS TO SOURCE DOCUMENTS.

Cost Account	Approved Original Budget	Approved Changes Budget	Pending Change Budget	Projected Total
Fulton County	57,722,700.00	11,761,258.00	0,512,000.00	70,056,000.00
Adams Middle School	10,120,000.00	0.00	0.00	10,120,000.00
Bowdoin High	6,200,000.00	4,650,000.00	0.00	10,850,000.00
Buskas K-8	1,820,000.00	0.00	2,110,000.00	3,930,000.00
Franklin Junior High	2,820,000.00	1,115,000.00	0.00	3,935,000.00
Jackson K-8	3,820,000.00	0.00	0.00	3,820,000.00
Marlin Junior High	7,015,000.00	0.00	0.00	7,015,000.00
McGraw Elementary	3,110,000.00	0.00	1,020,000.00	4,130,000.00
Madison High School	2,360,000.00	0,000,000.00	320,000.00	2,680,000.00
Northrup Elementary	2,660,000.00	225,000.00	0.00	2,885,000.00
Truman Middle	0.00	1,820,000.00	1,010,000.00	2,830,000.00
Williams Elementary	2,820,000.00	3,215,000.00	2,110,000.00	8,145,000.00
Zion High School	5,920,000.00	7,010,000.00	0.00	12,930,000.00
Macon County	39,840,350.00	2,901,000.00	1,811,000.00	44,552,350.00
Bucks Middle School	1,445,000.00	963,000.00	0.00	2,408,000.00
Carter High	2,627,000.00	263,000.00	245,000.00	3,135,000.00
Chess Center	5,110,000.00	0.00	0.00	5,110,000.00
Clatsam Elementary	6,380,000.00	0.00	320,000.00	6,700,000.00
Huffman School	5,450,000.00	0.00	0.00	5,450,000.00
Liberty Junior High	3,350,000.00	874,000.00	0.00	4,224,000.00
Rodgers - HVAC Upgrade	1,320,000.00	0.00	210,000.00	1,530,000.00
Rodgers - Roofing Upgrade	770,000.00	0.00	0.00	770,000.00
Wheeler Grant High	3,870,000.00	0.00	0.00	3,870,000.00
Grand Total	96,563,050.00	14,662,258.00	10,323,000.00	121,548,308.00



1720 PRAIRIE CITY ROAD
 SUITE 120
 FOLSOM, CALIFORNIA 95630
 (916) 294 2000
 (916) 294 2001 FAX
 (800) 850 2660
 WWW.MERIDIANSYSTEMS.COM

© COPYRIGHT 2007 MERIDIAN SYSTEMS. ALL RIGHTS RESERVED. PROLOG, PROLIANCE, MERIDIAN SYSTEMS and PROJECTTALK ARE REGISTERED TRADEMARKS OF MERIDIAN SYSTEMS, AN INDEPENDENT SUBSIDIARY OF TRIMBLE, IN THE UNITED STATES AND OTHER COUNTRIES. THE NAMES AND LOGOS OF OTHER COMPANIES MENTIONED HEREIN MAY BE TRADEMARKS OF THEIR RESPECTIVE OWNERS. THIS DOCUMENT IS FOR INFORMATIONAL PURPOSES ONLY. MERIDIAN SYSTEMS MAKES NO WARRANTIES, EXPRESSED OR IMPLIED, IN THIS DOCUMENT. MSS-10043--0407-500