



### BUDGET AND COST MANAGEMENT

THE PROLIANCE® BUDGET AND COST MANAGEMENT (BCM) APPLICATION OFFERS COMPLETE CONTROL OVER REAL ESTATE AND CONSTRUCTION PROJECT FINANCES. COMPANIES CAN DEFINE, TRACK, MANAGE, MEASURE, COMPARE, INTEGRATE AND RESPOND TO BUDGET AND COST ISSUES IN WAYS NEVER BEFORE POSSIBLE. MANAGERS AND EXECUTIVES CAN LOOK AT BUDGETS AS THEY ARE BEING CREATED AND SPENT – WITH AN ACCURATE VIEW OF FUTURE FORECASTED COSTS—PROVIDING AN INSTANT PROFIT AND LOSS PROJECTION.



Budget and Cost Management provides the backbone to managing and forecasting the financial success of all programs and projects. The application’s features combine with platform functions to deliver a comprehensive web-based system for managing the budget development process and comparing budgets to actual costs.

The Proliance Workflow Engine adds an exciting twist to budget management. Instead of static numbers, companies can manage the financial evolution of a project – from conceptual scope to detailed budgets and costs.

THE ANTICIPATED COST REPORT (ACR) IS THE SUMMARY VIEW OF ALL OF YOUR BUDGET AND COST TRANSACTIONS WITH HYPERLINKS TO INTERACTIVELY DRILL DOWN INTO DETAILED TRANSACTIONS.

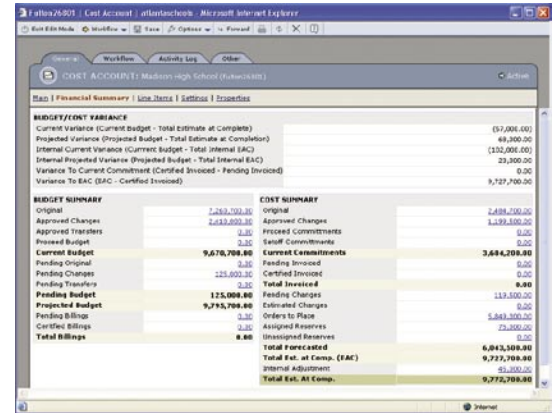
ACR   atlantaschools - Microsoft Internet Explorer				
Anticipated Costs: atlantaschools				
Tools Views Refresh Print Help				
View: [ Applied View Name Here ] Total Rows: 21 Last Updated: 7/28/2005 4:50 AM				
Code3Level0	Approved Original Budget	Approved Changes Budget	Pending Change Budget	Projected Total
Fulton County	57,739,700.00	12,960,500.00	8,554,000.00	79,254,200.00
Cost Account	Approved Original Budget	Approved Changes Budget	Pending Change Budget	Projected Total
Adams Middle School	10,158,000.00	0.00	647,000.00	10,805,000.00
Eisenhower High	6,900,000.00	1,850,000.00	874,500.00	9,624,500.00
Forbes K-8	1,829,000.00	0.00	2,189,000.00	4,018,000.00
Franklin Junior High	2,898,000.00	1,115,000.00	0.00	4,013,000.00
Jackson K-8	3,931,000.00	0.00	0.00	3,931,000.00
Klevin Junior High	7,015,000.00	0.00	0.00	7,015,000.00
LeClair Elementary	3,118,000.00	0.00	1,575,000.00	4,693,000.00
Madison High School	7,260,700.00	2,410,000.00	125,000.00	9,795,700.00
Sudbury Elementary	5,660,000.00	755,000.00	0.00	6,415,000.00
Truman Middle	0.00	1,598,500.00	1,008,500.00	2,607,000.00
Williams Elementary	2,975,000.00	3,215,000.00	2,135,000.00	8,325,000.00
Zorn High School	5,995,000.00	2,017,000.00	0.00	8,012,000.00
Macon County	38,620,050.00	2,604,000.00	1,811,500.00	43,035,550.00
Cost Account	Approved Original Budget	Approved Changes Budget	Pending Change Budget	Projected Total
Burke Middle School	1,645,000.00	965,000.00	0.00	2,610,000.00
Carter High	2,637,800.00	765,000.00	545,000.00	3,947,800.00
Davis Center	6,121,400.00	0.00	0.00	6,121,400.00
Glenhorn Elementary	6,580,000.00	0.00	978,000.00	7,558,000.00
Hudson School	6,404,000.00	0.00	0.00	6,404,000.00
Liberty Junior High	3,355,950.00	874,000.00	0.00	4,229,950.00
Rodgers - HVAC Upgrade	1,225,000.00	0.00	288,500.00	1,513,500.00
Rodgers - Roofing Upgrade	771,000.00	0.00	0.00	771,000.00
Ulysses Grant High	9,879,900.00	0.00	0.00	9,879,900.00
<b>Grand Total</b>	<b>96,359,750.00</b>	<b>15,564,500.00</b>	<b>10,365,500.00</b>	<b>122,289,750.00</b>

### PROGRAM MANAGEMENT

Hundreds of school construction projects. Dozens of retail store renovations. Multiple subprojects for a metro-area redevelopment program. These are just some of the types of programs the Proliance solution was designed to handle. Program and senior managers can track the financial and document details of hundreds of projects in real-time. Executives gain big picture visibility while managing program intricacies, such as delineating monies from multiple funding sources. Costs can be easily tracked and monitored at summary and detailed levels including real estate, permits, design, construction, equipment and move-in costs.

Secure web access enables authorized users to instantly drill down into a financial summary of a specific project within a program and easily run an interactive cost report that provides a roll-up summary of the entire program.

Hierarchical coding structures customized to the organization allow an assortment of viewing options for analyzing program costs. When used in conjunction with Contract Management, users can create contracts for materials and services that span the entire program or a single project.

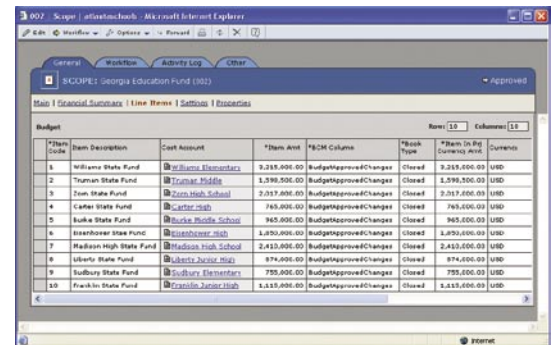


WITHIN A PROGRAM, YOU CAN DRILL DOWN INTO SPECIFIC PROJECTS TO GET AN INSTANT FINANCIAL PICTURE. PROLIANCE PROVIDES POWERFUL FORECASTING OF FUTURE BUDGET AND COST CHANGES.

### BUDGET MANAGEMENT

A wide selection of features allows budget management at all project stages and organizational levels:

- › *Scope Documents* allow budget management to begin at a project's earliest stages when little may be known about the overall scope. As the project becomes more defined, Scope Documents are used to manage the budget development and pre-construction process. The sum of these scope documents and authorizations eventually become locked in as the project's original budget.



PROLIANCE USES SCOPE DOCUMENTS TO MANAGE THE BUDGET DEVELOPMENT PROCESS. THE SCOPE DOCUMENT CAN ALSO BE USED TO MANAGE FUNDING SOURCES THAT CONTRIBUTE BUDGET MONEY TO AN OVERALL PROGRAM.

### BENEFITS OF PROLIANCE BUDGET MANAGEMENT SYSTEM

- › STAY IN FINANCIAL CONTROL OF PROJECTS AND PROGRAMS
- › MANAGE FINANCIAL RISKS AND CONTINGENCIES
- › PROJECT FORECASTED COSTS
- › AGGREGATE ALL COST TRANSACTIONS FOR A COMPLETE FINANCIAL SUMMARY
- › MANAGE THE BUDGET DEVELOPMENT AND PRE-CONSTRUCTION PROCESS
- › GET AN INSTANT FINANCIAL VIEW INTO EVERY PROJECT IN THE ORGANIZATION



*Item ID	*Code	Description	*BCM Column	*Amount	*Project Currency Amt	Currency	*Default Book Type
3099	1	Architectural Design	CostOriginal	600,000.00	600,000.00	USD	Closed
3100	2	Civil Design	CostOriginal	156,800.00	156,800.00	USD	Closed
3101	3	MEP Design	CostOriginal	426,500.00	426,500.00	USD	Closed
3102	4	Land Acquisition	CostOriginal	1,057,000.00	1,057,000.00	USD	Closed
3103	5	Environmental Impact	CostOriginal	236,400.00	236,400.00	USD	Closed
3104	6	Landscape Design	CostApprovedChanges	374,500.00	374,500.00	USD	Closed
3105	7	General Construction	CostOrdersToPlace	5,145,000.00	5,145,000.00	USD	Closed
3106	8	School Equipment	CostOrdersToPlace	704,000.00	704,000.00	USD	Closed
3107	9	Landscape Construction	CostApprovedChanges	825,000.00	825,000.00	USD	Closed
3108	10	Construction Contingency	CostAssignedReserves	75,000.00	75,000.00	USD	Closed
3109	11	Overall Contingency	CostInternalAdjustments	45,000.00	45,000.00	USD	Closed
3111	12	Revised Gym	CostPending	119,500.00	119,500.00	USD	Closed

COST ACCOUNT SETUP IS VERY FLEXIBLE. YOU CAN HAVE BUDGET ITEMS IN ONE LEVEL OF DETAIL AND COST ITEMS IN A LOWER LEVEL OF DETAIL.

- › *Cash Flow Documents* combine project costs and timeframes to generate anticipated cash flows. Multiple Cash Flow Documents in a project allows users to track various iterations of cash flow as the project progresses. This provides early project forecasting of cash flow and supports financial risk mitigation strategies required for successful cash management of projects.

grouping can include up to 10 possible cost types – for a total of 80 possible WBS codes. Codes can then be grouped in the Anticipated Cost Report (ACR) to provide many different budget views including CSI codes, elemental systems, phases, asset types and more.

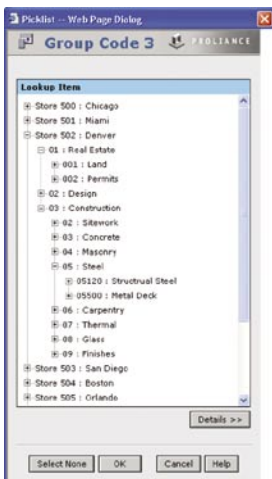
- › *Cost Accounts* provide a powerful tool for defining a project’s budget and cost line items, in summary or detail. Every organization has a cost-account structure that makes it possible to break down a large project into smaller definable parts. Cost Accounts can have many budget items and provide a match of line items on the cost side, or more detailed breakdowns of cost items. This provides tremendous flexibility in how you manage budget and costs in your organization. The coding structure of Cost Accounts makes extensive use of Proliance Hierarchical Coding features.

- › The *Anticipated Cost Report (ACR)* provides a powerful Web-based summary rollup of all documents used to build budgets including: commit contracts and changes, create invoices and billings. The ACR delivers an instant, up-to-date financial picture. Users can choose which columns to view and interactively drill down from summary level information to the exact source document that created cost transactions.

- › *Hierarchical Codes* help create a sophisticated Work Breakdown Structure (WBS) separating cost groupings into successive layers that roll up into totals or a detailed breakdown. Using the Hierarchical Coding feature, organizations can define up to eight cost groupings. Each cost

- › *Contracts and Change Orders* move through the system in similar ways – allowing managers to assign dollar amounts in the proper column and move through the Workflow Engine from soft to hard numbers.

- › *Transfer Documents* accommodate the dynamic nature of projects, allowing companies to manage budget and costs across the lifecycle. Forecasts and estimates are seldom exact – mechanical systems cost more than expected, lighting costs less and contingency funds need to be dispersed. To manage the project’s overall budget, Transfer Documents allow authorized



CREATE YOUR OWN HIERARCHY OF CODES AND ANALYZE FINANCIAL INFORMATION IN MANY DIFFERENT VIEWS.

users to manage transfers between cost accounts and can follow established workflow processes to ensure the right approvals occur.

### FLEXIBLE CONFIGURATION

Every organization uses different methodologies and best practices when creating budgets, contracting for commitments, determining process workflow and reporting. Because those unique processes often provide competitive advantages, Proliance adjusts to fit each organization's style.

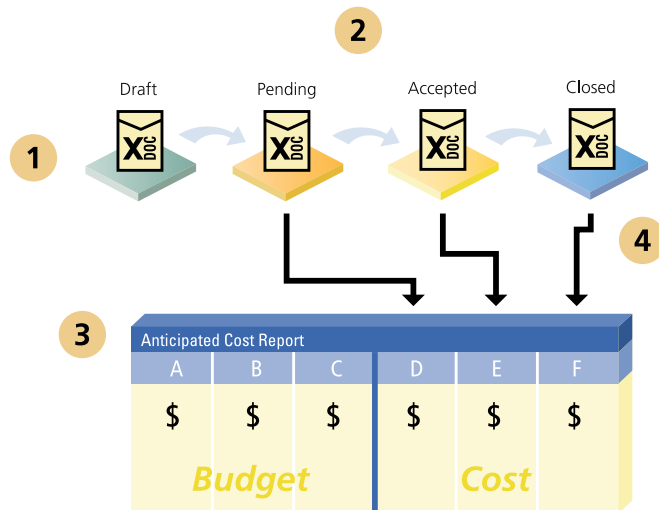
It combines Budget Management, Contract Management and a Workflow Engine to manage project, program and organizational-level finances. The system is also completely customizable to match the processes of each organization.

The ACR can be broken-down into a number of different budget, cost and customer-specified

columns. Using the Scope Document feature and the Workflow Engine together helps to create an evolving budget that moves through intelligent states such as draft, pending, pending approval, approved, and more. Users assign money to appropriate ACR columns and gradually transform the project's initial Scope Document into a final original budget.

BCM is a transactional system that ensures every transaction receives a date and time stamp. Full audit trails provide an immutable history of every change and allows managers to view a complete history in chronological order.

- 1 BUDGET AND COST TRANSACTIONS INCLUDE SCOPE DOCUMENTS, CONTRACTS AND CHANGE ORDERS
- 2 CONFIGURED WORKFLOW MOVES THE DOCUMENTS THROUGH INTELLIGENT STATES
- 3 ACR IS YOUR FINANCIAL HUB, CENTRALLY COLLECTING EVERY FINANCIAL TRANSACTION
- 4 MATCH DOCUMENT STATES TO YOUR APPROPRIATE ACR COLUMN



1720 PRAIRIE CITY ROAD  
 SUITE 120  
 FOLSOM, CALIFORNIA 95630  
 (916) 294 2000  
 (916) 294 2001 FAX  
 (800) 850 2660  
 WWW.MERIDIANSYSTEMS.COM

© COPYRIGHT 2007 MERIDIAN SYSTEMS. ALL RIGHTS RESERVED. PROLOG, PROLIANCE, MERIDIAN SYSTEMS AND PROJECTTALK ARE REGISTERED TRADEMARKS OF MERIDIAN SYSTEMS, AN INDEPENDENT SUBSIDIARY OF TRIMBLE, IN THE UNITED STATES AND OTHER COUNTRIES. THE NAMES AND LOGOS OF OTHER COMPANIES MENTIONED HEREIN MAY BE TRADEMARKS OF THEIR RESPECTIVE OWNERS. THIS DOCUMENT IS FOR INFORMATIONAL PURPOSES ONLY. MERIDIAN SYSTEMS MAKES NO WARRANTIES, EXPRESSED OR IMPLIED, IN THIS DOCUMENT. MSS-10028-101105-1000