



FIELD MANAGEMENT

FOR ORGANIZATIONS MANAGING SEVERAL REAL ESTATE AND CONSTRUCTION PROJECTS, CAPTURING ACCURATE DAILY JOURNAL DETAILS IS ESSENTIAL TO OVERALL PROJECT SUCCESS. THE INABILITY TO VERIFY WORK STATUS AND COMPLETED WORK IMPACTS PROFITABILITY AND INCREASES PROJECT RISK. THE PROLIANCE® FIELD MANAGEMENT APPLICATION TIES TOGETHER THE ORIGINAL PROJECT PLAN WITH WHAT IS ACTUALLY HAPPENING EACH DAY, PROVIDING KNOWLEDGE AND ACCOUNTABILITY OF ALL DAILY ACTIVITIES IN ONE, COMPREHENSIVE SOLUTION. THIS KNOWLEDGE AND PROJECT VISIBILITY ALLOWS MANAGERS AT EVERY ORGANIZATIONAL LEVEL TO MAKE THE RAPID, ACCURATE DECISIONS NEEDED TO KEEP PROJECTS ON TRACK AND MEET CORPORATE EXPECTATIONS.

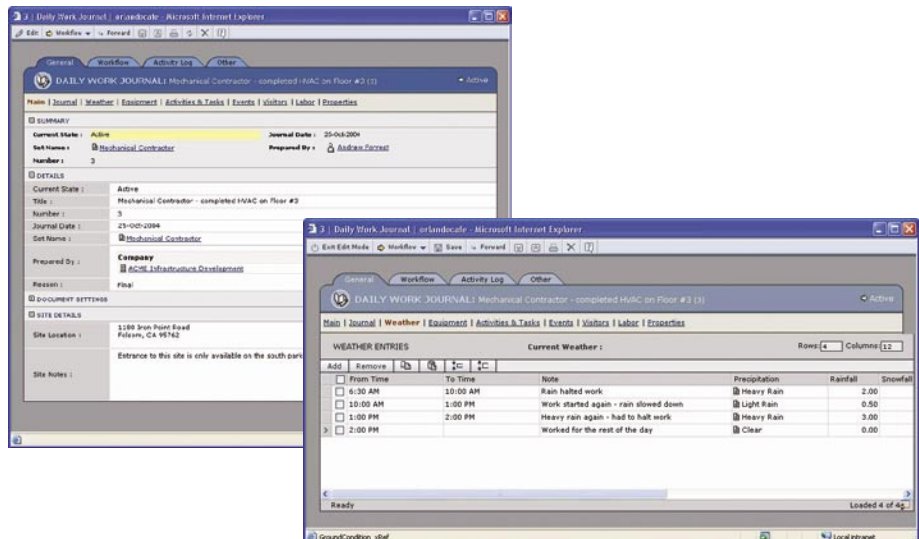


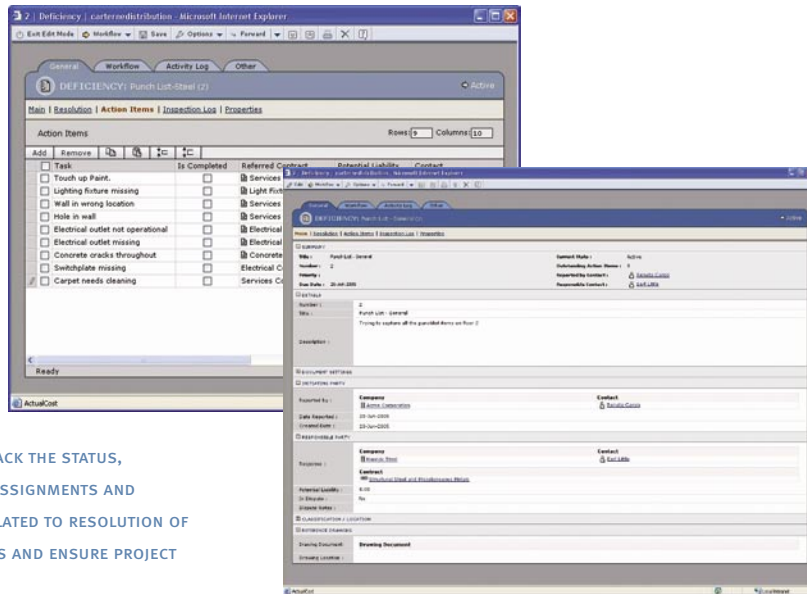
DAILY WORK JOURNAL

For a historic view of projects, users can record detailed information using the Daily Work Journal feature. The Daily Work Journal will record important information that relates to project performance, including:

- › **Journal Entries:** Build a detailed narrative of site conditions.
- › **Weather Conditions:** Record temperature, precipitation, wind and ground conditions.
- › **Visitors:** Identify days when visitors were on site.
- › **Activities:** Track task progress, start and completion dates.
- › **Subcontractor Labor:** Classify labor by type, and record pertinent details about performance and attendance.
- › **Equipment:** Itemize onsite equipment and specify usage.
- › **Events:** Describe occurrences that fall outside the area of work-in-progress such as, conflict, accidents, unknown conditions or any notable event.

KEEP A DETAILED DAILY JOURNAL OF ALL PROJECT ACTIVITIES TO ENSURE AN ACCURATE HISTORY SO MANAGEMENT CAN RESOLVE DISPUTES FAVORABLY.





ACTIVELY TRACK THE STATUS, RESOURCE ASSIGNMENTS AND ACTIONS RELATED TO RESOLUTION OF DEFICIENCIES AND ENSURE PROJECT QUALITY.

DEFICIENCY LISTS

Project quality depends on effectively noting, correcting and verifying completed work against project specifications. Deficiency Lists accurately compare project expectations and identify deficiencies. Comparisons can be made at milestone stages or any time during a project to capture detailed deficiency specifics and track all actions related to resolution.

- › *Facilitates Inspections:* Inspectors can plan inspections using a Deficiency List report that will clearly list all outstanding issues. Identify, organize and record specific areas in need of improvement, prepare notices to involved parties, track progress and completion and collect information into Inspection Packages. Inspection Packages enable users to create single items or to batch punch list items into packages related to a specific inspection.
- › *Defect Resolution:* Build and maintain a master list of defects and enable users to access, search and update lists. Assign action items to appropriate resources and, using the Proliance Workflow Engine, correspond with contacts by way of notifications that include links to specific deficiency lists. All communication and records have an immutable audit trail that assists in resolving defects under dispute.
- › *Deficiency List Package Series:* Easily enter data by duplicating a previous item used in the inspection. This ability to reduce re-entry allows the user to concentrate on what is new about the next item.

KEY FEATURES

- › *Duplicate Entries:* Acknowledging that day-to-day activities may not change greatly, users can duplicate a previous day's entry and make modifications, saving time and allowing the user to concentrate efforts on new activities.
- › *Roll-up Summaries:* Using coding relationships, the Daily Work Journal can create a summary report combining multiple vendor reports. Users can compare one rolled-up report against another report to get an accurate, detailed view of all activities for the day.
- › *Reports and Sorting Capabilities:* The ability to sort data by any number of criteria allows users to view journal entries by company or contact and by time period.
- › *Permanent Record:* Once reviewed and accepted, daily journal entries become part of the project's permanent record that can be relied on as a source of truth for analyzing performance, processing payments or settling disputes.



1720 PRAIRIE CITY ROAD
SUITE 120
FOLSOM, CALIFORNIA 95630
(916) 294 2000
(916) 294 2001 FAX
(800) 850 2660
WWW.MERIDIANSYSTEMS.COM

© COPYRIGHT 2007 MERIDIAN SYSTEMS. ALL RIGHTS RESERVED. PROLOG, PROLIANCE, MERIDIAN SYSTEMS AND PROJECTTALK ARE REGISTERED TRADEMARKS OF MERIDIAN SYSTEMS, AN INDEPENDENT SUBSIDIARY OF TRIMBLE, IN THE UNITED STATES AND OTHER COUNTRIES. THE NAMES AND LOGOS OF OTHER COMPANIES MENTIONED HEREIN MAY BE TRADEMARKS OF THEIR RESPECTIVE OWNERS. THIS DOCUMENT IS FOR INFORMATIONAL PURPOSES ONLY. MERIDIAN SYSTEMS MAKES NO WARRANTIES, EXPRESSED OR IMPLIED, IN THIS DOCUMENT. MSS-10032-022106-500