

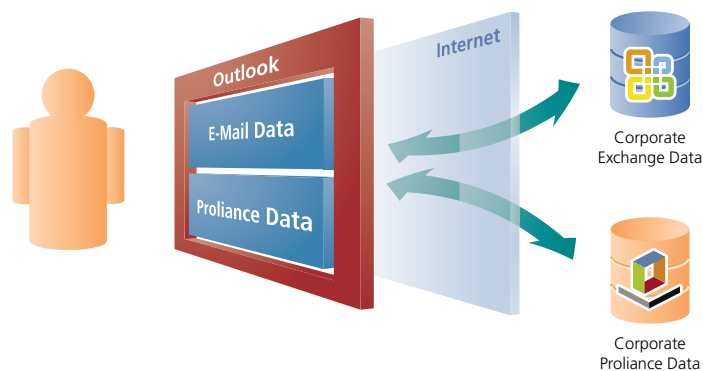
PROLIANCE NAVIGATOR FOR MICROSOFT OUTLOOK

SEAMLESS INTERACTION BETWEEN ENTERPRISE APPLICATIONS HAS COME TO BE EXPECTED, BUT ALL TOO OFTEN INTEROPERABILITY BETWEEN SYSTEMS FORCES USERS TO CREATE INDIRECT METHODS AND CUSTOM BUSINESS PROCESSES TO KEEP DATA ORGANIZED. PROLIANCE NAVIGATOR FOR MICROSOFT OUTLOOK ENABLES PROLIANCE USERS TO QUICKLY AND EASILY INTERACT WITH EMAIL AND PROLIANCE DATA VIA THEIR FAMILIAR OUTLOOK USER INTERFACE. PROLIANCE NAVIGATOR BRINGS TOGETHER TWO BEST OF CLASS ENTERPRISE SYSTEMS, ENABLING USERS TO WORK MORE EFFICIENTLY, REDUCE RISK AND WORK IN A FAMILIAR ENVIRONMENT.

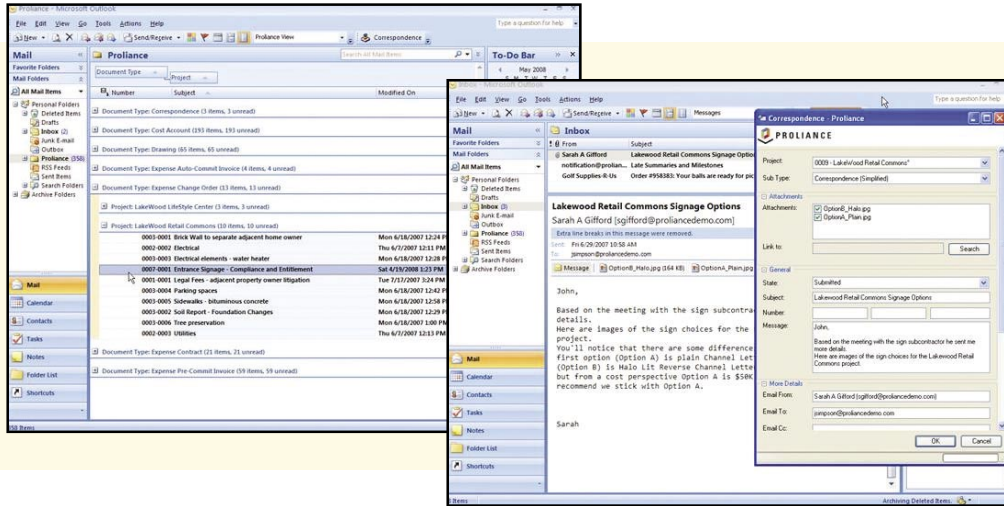
Proliance Navigator, Meridian's newest Role Based Solution, allows users to make easy work of two activities that all users must do, process inbound e-mails to Proliance and retrieve Proliance documents on an ad hoc basis.

Designed to extend Proliance to a familiar end user desktop application, Proliance Navigator enables organizations to:

- › **Increase Efficiency:** Leverage Outlook's Search, Filters, Flagging and Grouping capabilities to provide enhanced access to Proliance data.
- › **Reduce Risk:** Capture project email and attachments into Proliance correspondence documents ensuring critical project information is not lost.
- › **Ensure User Adoption:** Reduce training and ramp-up time by allowing users to work in a familiar environment.



ONCE DOCUMENTS ARE SYNCHRONIZED, USERS CAN EASILY RETRIEVE PROLIANCE DOCUMENTS USING OUTLOOK'S ROBUST CAPABILITIES.



WORK SEAMLESSLY BETWEEN APPLICATIONS BY SAVING OUTLOOK EMAILS AND ATTACHMENTS DIRECTLY TO PROLIANCE.

EMAIL IMPORT

Proliance Navigator allows users to save an Outlook email file and its attachments directly to Proliance as a Correspondence Document or Request For Information (RFI) Document. The Correspondence and RFI Documents can then be simultaneously linked to other Proliance Documents such as Invoices, Contracts, and Change Orders creating an easy-to-follow trail of information.

DATA MANAGEMENT & SYNCHRONIZATION

Leverage Outlook folder structure capabilities to organize Proliance documents in a way that is meaningful to you. Use Outlook's capabilities to search, filter, group, and sort across multiple Proliance projects.

NAVIGATOR SHORTCUTS

Proliance Navigator provides users with one-click access to Proliance Document Registers. Users can view, create and/or edit Proliance Documents directly from Outlook. Proliance Navigator also leverages Proliance 4.0's native Application Launcher functionality to give user the ability to view/edit/create Proliance Documents directly through Office Business Applications (OBA) built on Microsoft Excel.

SYSTEM REQUIREMENTS

- MICROSOFT OUTLOOK 2003 OR 2007 PROFESSIONAL
- SUPPORTING SYSTEM REQUIREMENTS (PROVIDED WITH INSTALLATION)
- MICROSOFT WEB SERVICES ENHANCEMENTS 2.0 SP3
- MICROSOFT VISUAL STUDIO TOOLS FOR OFFICE RUNTIME 2.0
- MICROSOFT OFFICE PRIMARY INTEROP ASSEMBLIES



www.meridiansystems.com

1720 PRAIRIE CITY ROAD
 SUITE 120
 FOLSOM, CALIFORNIA 95630
 (916) 294 2000
 (916) 294 2001 FAX
 (800) 850 2660

© COPYRIGHT 2009 MERIDIAN SYSTEMS. ALL RIGHTS RESERVED. PROLOG, PROLIANCE, MERIDIAN SYSTEMS AND PROJECTTALK ARE REGISTERED TRADEMARKS OF MERIDIAN SYSTEMS, AN INDEPENDENT SUBSIDIARY OF TRIMBLE, IN THE UNITED STATES AND OTHER COUNTRIES. THE NAMES AND LOGOS OF OTHER COMPANIES MENTIONED HEREIN MAY BE TRADEMARKS OF THEIR RESPECTIVE OWNERS. THIS DOCUMENT IS FOR INFORMATIONAL PURPOSES ONLY. MERIDIAN SYSTEMS MAKES NO WARRANTIES, EXPRESSED OR IMPLIED, IN THIS DOCUMENT. MSS- 1109-000