

## PROLIANCE® STARTER PACK FOR ACCELERATED SOLUTION DELIVERY

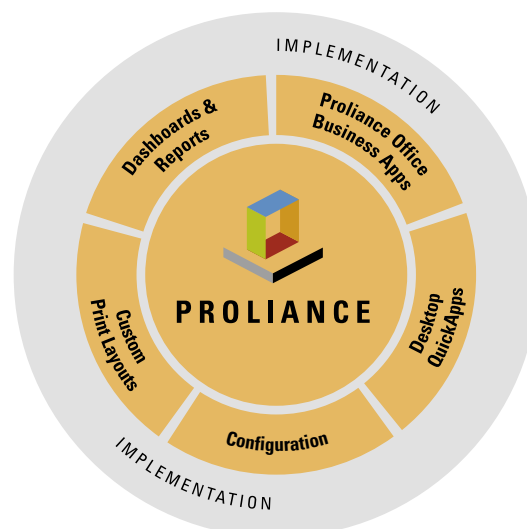
GETTING YOUR PROLIANCE SOFTWARE SOLUTION UP AND RUNNING QUICKLY IS KEY TO ADDRESSING YOUR PROJECT COST MANAGEMENT AND BUDGET MANAGEMENT NEEDS IN A TIMELY MANNER. MERIDIAN HAS DELIVERED THE PROLIANCE STARTER PACK – A PRE-PACKAGED COLLECTION OF SOLUTION ACCELERATOR COMPONENTS DESIGNED TO SPEED THE PATH TO IMPROVED END USER PRODUCTIVITY, INCREASE VISIBILITY INTO PROGRAMS AND PROJECTS, AND REDUCE THE SOLUTION IMPLEMENTATION TIMEFRAME. WITH KEY COMPONENTS INCLUDING PROLIANCE OFFICE BUSINESS APPLICATIONS AND PRECONFIGURED DASHBOARDS, METRICS, ALERTS AND BEST PRACTICES, THE PROLIANCE STARTER PACK WILL HELP ORGANIZATIONS REALIZE ROI FROM THE PROLIANCE SOLUTION SOONER.

By leveraging Meridian’s deep expertise working with building owners, construction and engineering firms to configure, customize and implement project management software solutions, organizations can dramatically impact the implementation schedule of the Proliance solution. Meridian has uniquely combined this domain experience and leading technology into one package, the Proliance Starter Pack.

Our library of Solution Accelerator components includes:

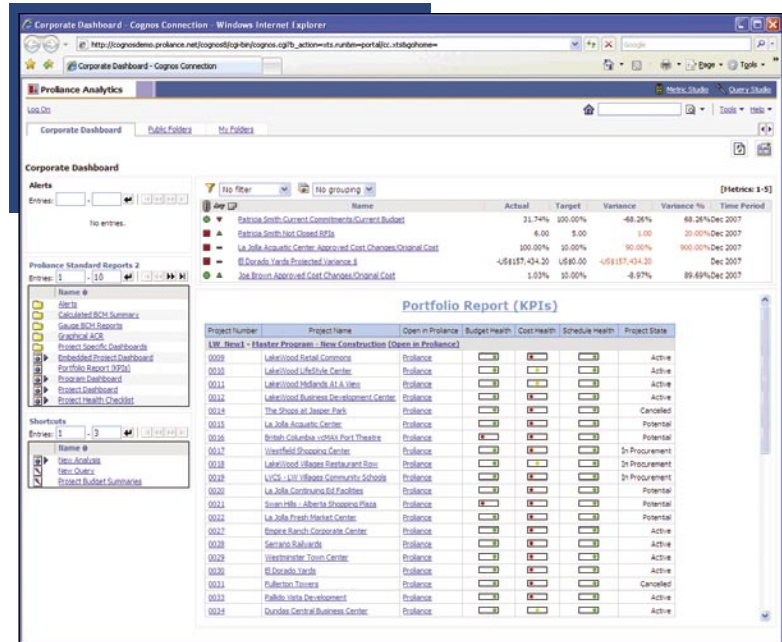
- › Business Intelligence Dashboards and Reports
- › Proliance Office Business Applications
- › Microsoft Word “Custom Print Layouts”
- › Standard Project Management Configurations
- › Desktop Quick Applications

THE PROLIANCE STARTER PACK IS A COLLECTION OF SOLUTION ACCELERATOR COMPONENTS, DESIGNED TO PROVIDE AN ADVANCED STARTING POINT FOR IMPLEMENTATION DELIVERABLES.



These Solution Accelerators bring Proliance to the end users desktop by using familiar applications such as Excel and Microsoft Word, while providing senior management with visibility into the entire portfolio of projects with preconfigured dashboards, metrics and alerts.

Developed as a Service Oriented Architecture (SOA) solution, Proliance offers a scalable, extendable, and fully configurable application based on Web Services technology and XML. The Starter Pack leverages this flexible architecture to implement Proliance to meet the specific organizational needs of its users.



THIS IS AN EXAMPLE OF THE DASHBOARD AVAILABLE WITH THE STARTER PACK. ALL THE KEY INFORMATION IS PRESENTED ON THIS SCREEN GRAPHICALLY, GIVING USERS EVERYTHING REQUIRED TO MAKE CRITICAL DECISIONS.

### BUSINESS BENEFITS

<p><b>SHORTEN PROLIANCE IMPLEMENTATION TIME</b></p>	<p>Accelerate the ROI on your Proliance solution by gaining an advanced starting point – no need to start from the ground up, and your organization will benefit from Meridian’s previous implementation and industry knowledge.</p>
<p><b>REDUCE IMPLEMENTATION COSTS</b></p>	<p>Preconfigured templates and configuration reduce the typical time and material Professional Services costs associated with software deployments. More time is spent configuring and adjusting components, rather than defining and creating deliverables from scratch.</p>
<p><b>IMPROVE VISIBILITY INTO KEY METRICS</b></p>	<p>Meridian’s standard dashboards and reports are already configured to pull together information from the most important project and program data elements stored within the Proliance solution.</p>
<p><b>LEVERAGE INDUSTRY BEST PRACTICES</b></p>	<p>Customers benefit from our knowledge base of previous implementations completed with similar companies by leveraging best practices and lessons learned from other large scale project controls initiatives.</p>



## STARTER PACK SOLUTION ACCELERATORS

Your Proliance Starter Pack will include the following pre-configured solution accelerator components:

### BUSINESS INTELLIGENCE DASHBOARDS AND REPORTS

These preconfigured dashboards and standard reports allow you to instantly evaluate the performance of your programs and projects. They were developed for both executive management monitoring an entire project portfolio, as well as for project managers who are responsible for the day-to-day management of projects. These reports let you quickly analyze the health of projects and programs, so you can zero in on the projects that need extra attention.

Included Reports:

- › Portfolio KPI Report
- › Program Dashboard Report
- › Project Dashboard Report
- › Project Health Checklist Report
- › Vendors Across Portfolios Report
- › Gauge Budget Cost Management Reports (six different reports by dimensions)
- › Calculated Budget Cost Management Summary Reports (six different reports by dimensions)
- › Graphical Anticipated Cost Reports (six different reports by dimensions)

Description	Cost Account	Item Qty	Unit Price	Item Amount	ACR Column
13 Geotechnical Survey and Soil Borings	0040 / Land - Soil Borings and Gea	1	30000.00	30000.00	Budget Approved Origin/
14 Environmental Permitting	0019 / Construction - Infrastructure	1	10000.00	10000.00	Budget Approved Origin/
15 Seismic Study Analysis Report	0011 / Services - P.M. - Seismic Stud	1	5000.00	5000.00	Budget Approved Origin/
16 Site Investigation Analysis	0003 / Land - Site Investigation	1	50000.00	50000.00	Budget Approved Origin/
17 Site Acquisition	0033 / Land - Acquisition	1	200000.00	200000.00	Budget Approved Origin/
18 Demolition and Prepwork	0016 / Construction - Site - Demolitor	10	30000.00	300000.00	Budget Approved Origin/
19 Excavation and Fill	0041 / Land - Earthwork - Excavation s	1	250000.00	250000.00	Budget Approved Origin/
20 Erosion Sediment Control	0038 / Land - Erosion Sediment Contr	1	25000.00	25000.00	Budget Approved Origin/
21 Topography and services	0008 / Land - Site Property and Topo	1	25000.00	25000.00	Budget Approved Origin/
22 Chemical Testing and Labwork	0037 / Land - Chemical Inspection and	1	30000.00	30000.00	Budget Approved Origin/
23 Life-cycle Cost Analysis	0012 / Services - P.M. - Lifecycle Cost	1	5000.00	5000.00	Budget Approved Origin/
24 Legal Fees	0053	300000.00		300000.00	Budget Approved Origin/
25 P.M. - Site Mobilization - GC	0053	10000.00		50000.00	Budget Approved Origin/
26 Demolition - Hazmat Removal	0029	20000.00		20000.00	Budget Approved Origin/
27 Septic Tank removal	0049	5000.00		25000.00	Budget Approved Origin/
28 Debris Removal - Site clearing	0029	300000.00		300000.00	Budget Approved Origin/

THE PROLIANCE SCOPE SMARTDOC ALLOW USERS TO EASILY CREATE AND UPDATE BUDGETS

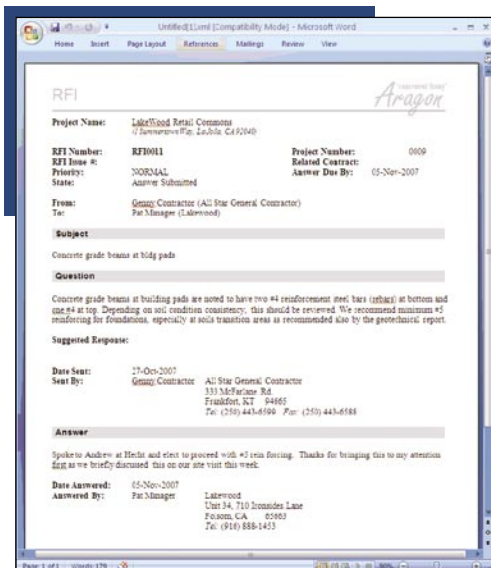
### BUSINESS APPLICATIONS

Office Business Applications are ‘smart documents’ that leverage the familiar interface of Excel. Locally on their desktop, Proliance end users can use one of many Excel documents that are included in the Starter Pack to securely connect in real time over the internet and save data directly into the Proliance database. Office Business Applications included are:

- › Scope/Budget SmartDoc
- › Contracts/Commitments SmartDoc
- › Pre-Commit Invoice SmartDoc
- › Cost Account SmartDoc

### MICROSOFT WORD CUSTOM PRINT LAYOUTS

Six Microsoft Word Custom Print Layouts (CPL’s) provide users with the ability to print detailed documents like contracts, change orders and meeting minutes with layout and formatting directly into Microsoft Word. CPL’s leverage the native XML support of Proliance to incorporate enterprise project data stored in a central location, with a familiar, editable format.

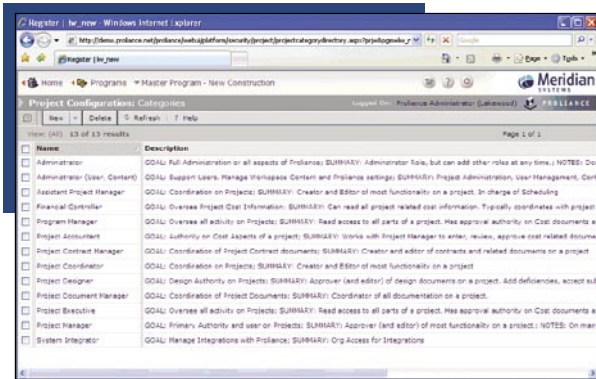


THIS IS AN EXAMPLE OF THE RFI CPL AVAILABLE WITH THE STARTER PACK. DATA FROM WITHIN PROLIANCE IS MERGED INTO A WORD TEMPLATE FILE FOR EASY PRINTING.

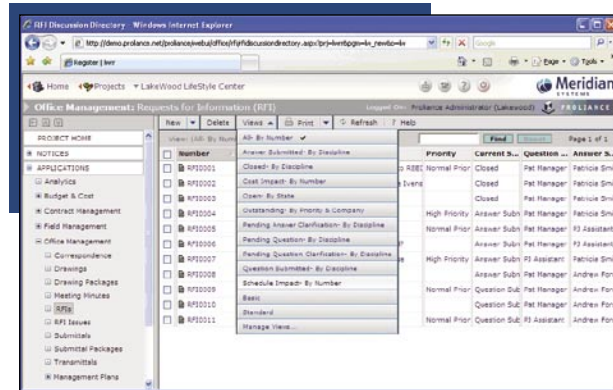
## STANDARD PROJECT MANAGEMENT CONFIGURATION

A series of pre-defined workflows and document templates are provided with associated security roles and corresponding look-ups. This pre-defined configuration was developed from Meridian's deep project and program management expertise, as well as feedback from many customers who have already implemented Proliance. Standard configuration includes:

- › Security Roles
- › Security Categories
- › Document templates/sub-types
- › Standard Lookup lists
- › Register views – over 150 preconfigured views



THIS SHOWS THE NUMEROUS SECURITY CATEGORIES INCLUDED WITH THE STARTER PACK TO GET YOU WELL ON YOUR WAY USING PROLIANCE.



AN EXAMPLE OF THE VIEWS INCLUDED WITH THE STARTER PACK – THIS VIEW HIGHLIGHTS THE RFI REGISTER.

## DESKTOP QUICK APPLICATIONS

Desktop Quick Applications are utilities that allow project teams to quickly enter or upload vast amounts of project data, like drawing files, in batches. Import utilities provide additional rapid data entry benefits. For example, you can consolidate the reporting and management of schedules across the enterprise with the Schedule Import utility which supports importing data from other popular scheduling applications into Proliance. Utilities included are:

- › Batch File Upload Utility
- › Schedule Import Utility

## TECHNICAL REQUIREMENTS AND DEPENDENCIES

- › Microsoft .NET runtime version 1.1
- › Microsoft Office 2003 (Professional)
- › Microsoft Web Services Enhancements 2.0 Service Pack 3
- › Ability to modify local .NET security policies to trust Meridian assemblies
- › Microsoft Windows XP SP2

**FOR MORE INFORMATION ON THE PROLIANCE STARTER PACK, VISIT OUR WEB SITE AT [WWW.MERIDIANSYSTEMS.COM](http://WWW.MERIDIANSYSTEMS.COM) OR CALL (800) 850 2660.**



1720 PRAIRIE CITY ROAD  
SUITE 120  
FOLSOM, CALIFORNIA 95630  
(916) 294 2000  
(916) 294 2001 FAX  
(800) 850 2660  
[WWW.MERIDIANSYSTEMS.COM](http://WWW.MERIDIANSYSTEMS.COM)

© COPYRIGHT 2007 MERIDIAN SYSTEMS. ALL RIGHTS RESERVED. PROLOG, PROLIANCE, MERIDIAN SYSTEMS AND PROJECTTALK ARE REGISTERED TRADEMARKS OF MERIDIAN SYSTEMS, AN INDEPENDENT SUBSIDIARY OF TRIMBLE, IN THE UNITED STATES AND OTHER COUNTRIES. THE NAMES AND LOGOS OF OTHER COMPANIES MENTIONED HEREIN MAY BE TRADEMARKS OF THEIR RESPECTIVE OWNERS. THIS DOCUMENT IS FOR INFORMATIONAL PURPOSES ONLY. MERIDIAN SYSTEMS MAKES NO WARRANTIES, EXPRESSED OR IMPLIED, IN THIS DOCUMENT.