

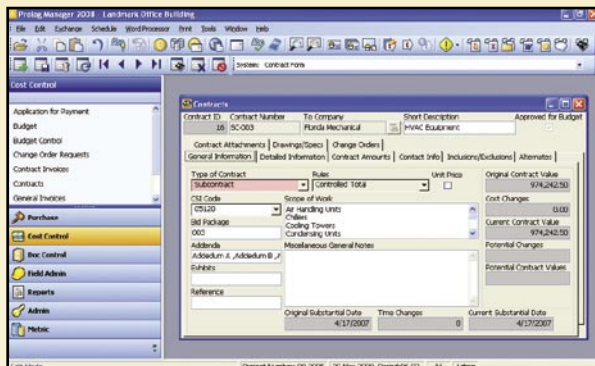
# PROLOG ► Manager



## The Industry Standard for Construction Project Control and Transparency

Prolog® Manager is a Windows-based project management application that automates daily construction processes, from project design to closeout. Built on the Microsoft SQL Server database platform, Prolog Manager delivers robust performance and real-time visibility for managing construction projects and programs. With features including collaboration, purchasing management, cost control, document management and field administration capabilities, Prolog Manager has become the industry standard for construction project control and transparency.

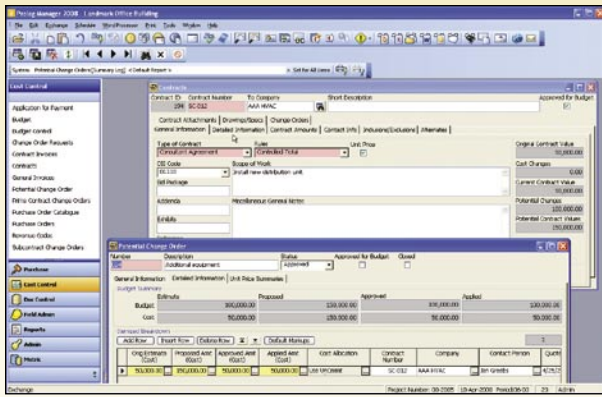
Project-based organizations within AEC, Commercial, and Public sector industries use Prolog to improve top-line revenue growth while reducing their capital construction costs. Prolog Manager helps general contractors, engineering firms, building owners and public agencies efficiently manage all critical project data in one central software system, ensuring project management best practices are followed. With Prolog Manager, your project team members can quickly identify and mitigate potential areas of risk—before they impact project delivery performance or your bottom line.



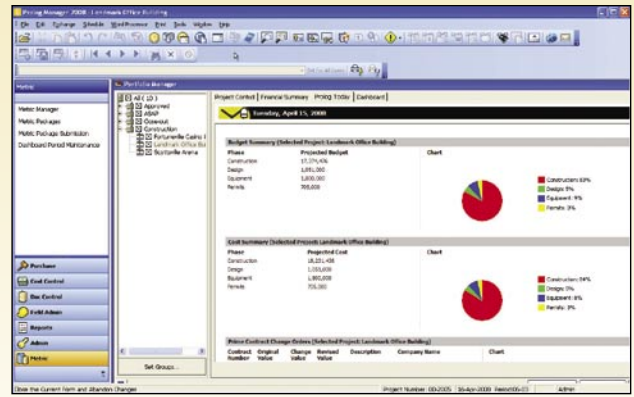
*Prolog Manager has an expandable and collapsible menu design, and a navigation bar with large, easy-to-understand icons.*

## Benefits

- ▶ Track key performance indicators to monitor all levels of project performance using metrics and dashboards
- ▶ Quickly view and manage selected projects or groups of projects; create multi-project reporting, and access charts showing project budget, costs and contract status
- ▶ Manage budgets, commitments, costs, savings and overruns with detailed cost control functionality
- ▶ Track change orders and see their impact on budgets and costs
- ▶ Access 400 standard reports out of the box or generate unique reports that meet your individual business needs
- ▶ Easily create, distribute and analyze bid packages and buyout items to streamline your procurement processes
- ▶ Effectively manage daily work journals, crews, inspections, punch lists and other quality control tasks in a centralized tracking system



Track Key Performance Indicators (KPIs) to monitor all levels of company profitability, efficiency and performance.



View a real-time summary of your project cost and document control with Prolog Today.

## Executive Dashboard

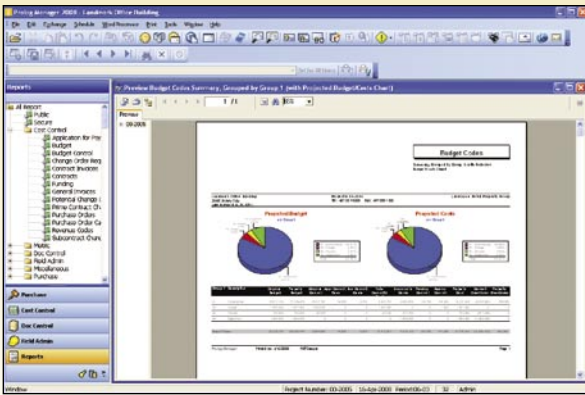
| Feature                                    | Advantage  |
|--|--|
| Dashboards                                 | Configure and customize multiple levels of metrics and track results at the corporate, project, or individual level  |
| Metric Manager                             | Run metrics on a portfolio of projects with a single click; save time from entering individual projects and packages |
| Dashboard Period Maintenance               | Configure predefined time periods to collect data (weekly, monthly, quarterly)                                       |
| Dashboard Summary Tab in Portfolio Manager | Group individual metrics into Summaries to collect data on individual or multiple projects at the same time          |
| Metric Package Submission Forms            | Create metrics; gather and organize data; easily summarize and report on performance results                         |
| Metric Packages                            | Post results of summaries and make available for analysis, review and approval                                       |

## Report Manager

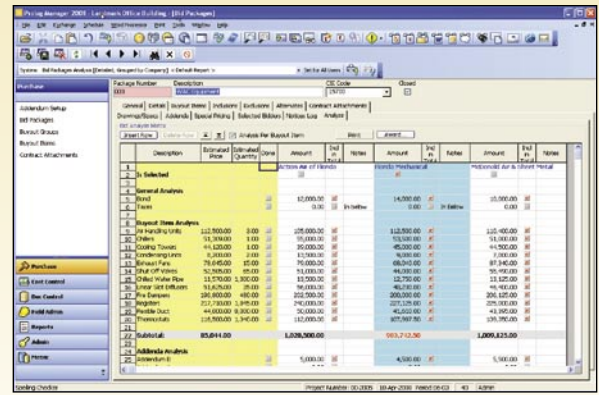
| Feature                                   | Advantage   |
|---|---|
| Batch Reporting                           | Print groups of reports for simple, routine reporting             |
| Exports Directly to PDF or XML            | Easily distribute all report output using the Internet and email  |
| Access to More Than 400 Reports           | Get all the information you need when you want it                 |
| Full filtering and grouping               | Selectively view the information that's important to you          |
| Extensive report customization capability | Generate reports that meet your individual business process needs |

## Document Control

| Feature                     | Advantage  |
|-----------------------------|--|
| Auto Alerts                 | Stay alert to critical follow-up items                                       |
| Drawing Packages            | Manage content, status and transmittal of drawing packages                   |
| HotList                     | Track follow-up items  |
| Drawings and Specifications | Log and track revisions on all drawings and specifications                   |
| Dunning Letters             | Stay on top of all issues and reduce risk by maintaining an audit trail      |
| Issues                      | Create an issue history to record all information related to specific issues |
| Meeting Minutes             | Reduce problem resolution time by sharing meeting information more quickly   |
| Requests for Information    | Reduce response time and impact on project schedule                          |
| Submittal Packages          | Improve submittal response times   |
| Submittal Register          | Track required submittals to improve timeliness                              |
| Transmittal Queue           | Save time by scheduling transmittals to the printer or fax                   |



Run budget reports with charting for effective communication.



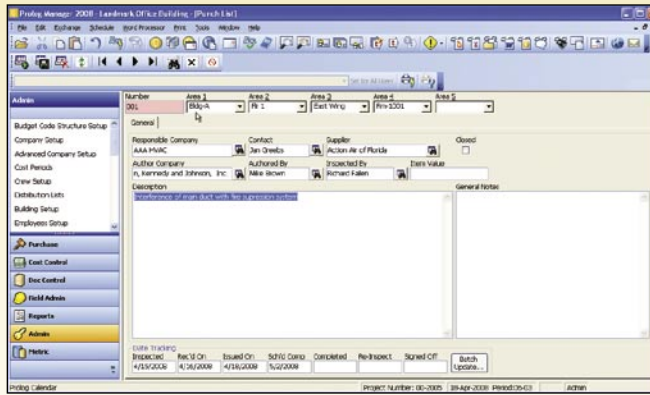
Manage competitive bidding process and analysis across multiple projects.

## Procurement Control

| Feature                  | Advantage  |
|--------------------------|--|
| Advanced                 | Company Setup: Improve record keeping; track detailed information, including qualifications, certifications and contract history |
| Buyout Groups            | Group buyout items into logical groups or systems for cost analysis  |
| Addenda                  | Manage pre-bid scope; track addenda for all bid packages affected  |
| Award Bid Package Wizard | Eliminate double entry in procurement and contract management  |
| Bid Analysis             | Analyze all bidders using one easy-to-use matrix   |
| Bid Packages             | Manage buyout more efficiently; track all scopes of work as bid packages   |
| Buyout Items             | Eliminate scope errors; track all items to procure for each project  |
| Contract Attachments     | Log all contract attachments that bidders are responsible to acknowledge   |
| Select Bidder Wizard     | Increase choice of bidders; search for companies that meet your qualifications   |
| Send Notices Wizard      | Facilitate communication with bidders; send bid invitations and quote requests via email or fax                                  |

## Cost Control

| Feature   | Advantage  |
|---|--|
| Budget  | Manage budgets, commitments, costs and savings/overruns                              |
| Application Integration Software Development Kit (AI-SDK) | Integrate Prolog Manager cost info with other systems, such as accounting            |
| Change Order Requests                                     | Reduce change order request cycle  |
| Budget Control Log  | Identify exposures, trends and budget transfers                                      |
| Change Orders   | Record changes in Prolog Manager for instant budget updates                          |
| Applications for Payment                                  | Save time; generate requisitions from invoices and change orders                     |
| Contracts   | Write contracts faster using Microsoft Word  |
| Expenditure Authorizations and Funding Assignments        | Run reports by account or funding source to determine dollars spent from each source |
| Invoices  | Update the cost-to-date project budget with automatic invoice recording              |
| Potential Change Orders                                   | Integrate change management directly into the budget and contracts                   |
| Purchase Orders   | Write purchase orders faster; use material catalogue for quick PO generation         |
| Revenue Codes   | Learn revenue sources through tracking reports                                       |



Effectively manage daily work journals, crews and equipment, events, inspections, tests, safety notices, punch lists and other quality control tasks in a centralized tracking system within Prolog Manager.

## Field Administration

| Feature                | Advantage  |
|------------------------|--|
| Calendar               | Keep track of events and other significant dates in your project |
| Closeout Log           | Manage closeout tasks to complete the project more quickly       |
| Crew/Employee Tracking | Track man hours and electronic time sheets                       |
| Daily Details          | Record weather and general conditions for each project           |
| Daily Work Journal     | Record daily construction activities                             |
| Events                 | Track production and milestone events                            |
| Field Work Directives  | Reduce risk of surprise changes (for authorized work)            |
| Inspections and Tests  | Verify compliance with required inspections and tests            |
| Material Inventory     | Document all deliveries and associated inventory                 |
| Notices to Comply      | Increase quality control on a project                            |
| Punch List Tracking    | Reduce time required to complete a punch list                    |
| Safety Notices         | Reduce safety violations and accidents through safety management |

## Email Logging

| Feature                 | Advantage   |
|-------------------------|---|
| Dedicated Project Email | Prevent lost information by keeping important emails in a central project database. Search, find and use email information in reports, queries, and building issues |
| Attachments             | Team members can forward their emails, along with any attachments to a dedicated project email account  |
| Email Logs              | Establish a project communication history and immutable audit trails  |
| Security Manager        | Keep information secure by easily managing access to project email database   |
| Email Protocol          | SMTP and MAPI, allowing Prolog Manager to work with just about any email system   |
| Compatibility           | Microsoft Exchange/Outlook, Lotus Notes/Domino and many others  |

## Minimum Requirements

- ▶ **Hardware:** Any hardware that can host a supported Operating System with reasonable performance and responsiveness. Better performance is achieved with faster processors and more memory.
- ▶ **Operating System:** Windows XP (SP2 or later), Windows Vista (any version), Windows 2000 SP4, Windows 2003 (SP1 or later)
- ▶ **Database Server:** SQL Server 2005 or SQL Server 2005 Express Edition
- ▶ **Virtualization (optional):** Hyper-V or VMWare



1720 Prairie City Road  
Suite 120  
Folsom, California  
95630  
USA

(916) 294 2000  
(916) 294 2001 fax  
(800) 850 2660  
www.meridiansystems.com  
sales@meridiansystems.com

© Copyright 2010 Meridian Systems. All rights reserved. Prolog and Meridian Systems are registered trademarks of Meridian Systems, an independent subsidiary of Trimble, in the United States and other countries. The names and logos of other companies mentioned herein may be trademarks of their respective owners. This document is for informational purposes only. Meridian Systems makes no warranties, expressed or implied, in this document.033110-500