



PROLIANCE

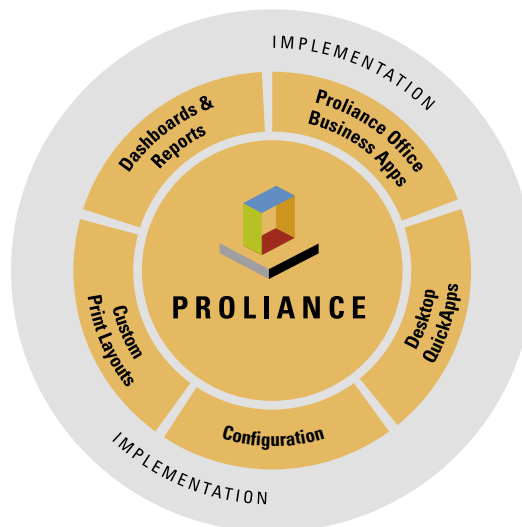
PROLIANCE® GOVERNMENT STARTER PACK FOR TRANSPARENCY AND ACCOUNTABILITY

TODAY, MORE THAN EVER, HAVING STRICT OVERSIGHT, TRANSPARENCY, AND ACCOUNTABILITY INTO CAPITAL BUILDING PROJECT BUDGETS AND SCHEDULES IS IMPERATIVE. WITH THE PASSAGE OF THE AMERICAN RECOVERY AND REINVESTMENT ACT, THE US PRESIDENT HAS MADE IT CLEAR THAT EVERY TAX DOLLAR SPENT ON ECONOMIC RECOVERY WILL BE SUBJECT TO UNPRECEDENTED LEVELS OF SCRUTINY. WHETHER YOU ARE A PUBLIC AGENCY OR AN ENGINEERING AND CONSTRUCTION FIRM TAKING ADVANTAGE OF STIMULUS FUNDING, PUBLICLY FUNDED INFRASTRUCTURE PROJECTS REQUIRE ACCURATE AND TIMELY REPORTING ON PROJECT DETAILS AND STATUS, INCLUDING DETAILED PROGRAM OBLIGATIONS, PROGRAM FUNDING, WEEKLY PROJECT PROGRESS AND GENERAL PROJECT STATUS.

Meridian has delivered the Proliance Government Starter Pack – a pre-packaged collection of tools and reports designed to meet the guidance established by the Accountability and Transparency board. With key components including preconfigured dashboards and reports, Proliance office business applications, and established best practices, the Proliance Government Starter Pack will speed the path to transparent and accurate reporting on stimulus funded projects.

Meridian has uniquely combined its public sector domain experience and leading technology into one package, the Government Starter Pack, so that organizations can gain efficiencies and easily respond to Recovery Act reporting requirements. Developed as a Service Oriented Architecture (SOA) solution, Proliance offers a scalable, extendable, and fully configurable application based on Web Services technology and XML. The Government Starter Pack leverages this flexible architecture to implement Proliance to meet the specific reporting requirements of stimulus funded projects.

THE PROLIANCE GOVERNMENT STARTER PACK IS DESIGNED TO SPEED THE PATH TO TRANSPARENT AND ACCURATE REPORTING ON STIMULUS FUNDED PROJECTS.



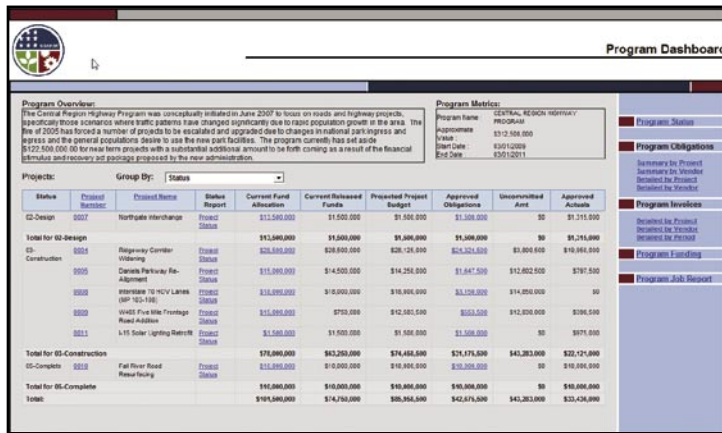
The Proliance Government Starter Pack includes the following pre-configured components:

OVERSIGHT DASHBOARDS AND REPORTS

The preconfigured Oversight dashboards and reports are based upon the Recovery Act reporting guidance from the Office of Management and Budget (OMB). They allow you to monitor the performance of your programs and projects from the funding, budget, contract obligations, and actual cost perspectives. They were developed for both executives monitoring an entire program, as well as for project managers who are responsible for the day-to-day management of individual projects.

Program Management Dashboard

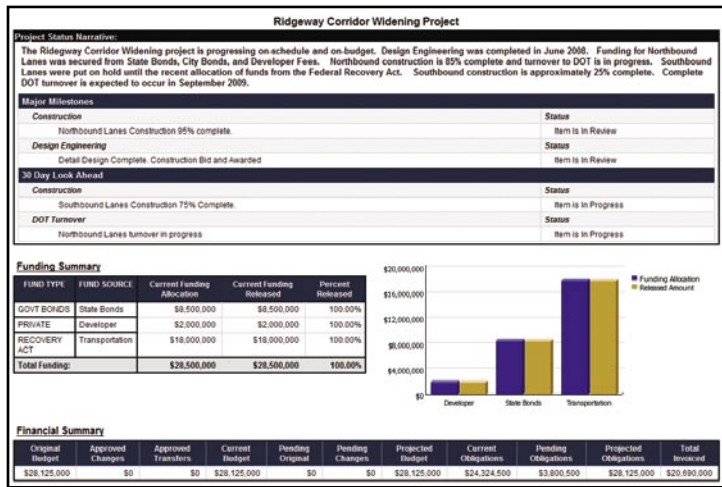
The Program Dashboard provides visibility into funding, budget, obligations and actual costs for each project.



Status	Budget	Current Released	Approved Obligations	Uncommitted Amt	Approved Actuals
02-Design	\$11,500,000	\$1,500,000	\$1,500,000	\$0	\$0
03-Construction	\$13,000,000	\$1,500,000	\$1,500,000	\$0	\$0
04-Complete	\$11,000,000	\$10,000,000	\$10,000,000	\$0	\$10,000,000
Total	\$35,500,000	\$3,500,000	\$3,500,000	\$0	\$0

Project Status Report

The Project Status Report provides visibility into major milestones, 30-day look forward, and the project's funding and financial summary.



Project Status Narrative:
The Ridgeway Corridor Widening project is progressing on schedule and on budget. Design Engineering was completed in June 2008. Funding for Northbound Lanes was secured from State Bonds, City Bonds, and Developer Fees. Northbound construction is 85% complete and turnover to DOT is in progress. Southbound Lanes were put on hold until the recent allocation of funds from the Federal Recovery Act. Southbound construction is approximately 25% complete. Complete DOT turnover is expected to occur in September 2009.

Major Milestones:

Milestone	Status
Construction - Northbound Lanes Construction 85% complete	Item is in Review
Design Engineering - Detail Design Complete. Construction Bid and Awarded	Item is in Review

30 Day Look Ahead:

Milestone	Status
Construction - Southbound Lanes Construction 75% Complete	Item is in Progress
DOT Turnover - Northbound Lanes turnover in progress	Item is in Progress

Funding Summary:

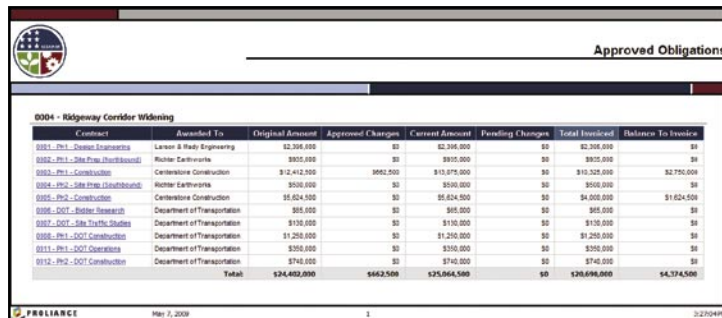
FUND TYPE	FUND SOURCE	Current Funding Allocation	Current Funding Released	Percent Released
GOVT BONDS	State Bonds	\$8,500,000	\$8,500,000	100.00%
PRIVATE	Developer	\$2,000,000	\$2,000,000	100.00%
RECOVERY ACT	Transportation	\$18,000,000	\$18,000,000	100.00%
Total Funding:		\$28,500,000	\$28,500,000	100.00%

Financial Summary:

Original Budget	Approved Changes	Approved Transfers	Current Budget	Pending Original	Pending Changes	Projected Budget	Current Obligations	Pending Obligations	Projected Obligations	Total Incurred
\$28,125,000	\$0	\$0	\$28,125,000	\$0	\$0	\$28,125,000	\$24,324,500	\$3,800,500	\$28,125,000	\$20,690,000

Approved Obligations Report

The Approved Obligations report provides a summary of contracts and actual costs.



Contract	Approved Changes	Current Amount	Pending Changes	Total Incurred	Balance To Budget
0001-001-Design/Engineering	\$2,300,000	\$2,300,000	\$0	\$2,300,000	\$0
0002-001-Construction	\$12,412,500	\$6,612,500	\$11,875,000	\$18,487,500	\$2,750,000
0003-001-Construction	\$8,000,000	\$0	\$0	\$0	\$8,000,000
0004-001-Construction	\$1,250,000	\$0	\$1,250,000	\$1,250,000	\$0
0005-001-Construction	\$300,000	\$0	\$300,000	\$300,000	\$0
0006-001-Construction	\$5,650,000	\$0	\$5,650,000	\$5,650,000	\$0
0007-001-Construction	\$300,000	\$0	\$300,000	\$300,000	\$0
0008-001-Construction	\$1,250,000	\$0	\$1,250,000	\$1,250,000	\$0
0009-001-Construction	\$300,000	\$0	\$300,000	\$300,000	\$0
0010-001-Construction	\$740,000	\$0	\$740,000	\$740,000	\$0
Total	\$24,402,000	\$6,612,500	\$25,664,500	\$26,696,000	\$4,374,500

In addition to Recovery Act specific reports, the Proliance Government Starter Pack includes bonus applications and features that create efficiencies and provide consistency across all projects.

PROLIANCE OFFICE BUSINESS APPLICATIONS

Office Business Applications leverage the familiar interface of Microsoft Excel. Locally on their desktop, Proliance end users can use one of many Excel documents that are included in the Government Starter Pack to securely connect in real time over the Internet and save data directly into the Proliance database. Office Business Applications included are: Scope/Budget, Contracts/Obligations, Pre-Commit Invoice, Cost Account, and Cost Event.

MICROSOFT WORD CUSTOM PRINT LAYOUTS

Microsoft Word Custom Print Layouts (CPLs) provide users with the ability to print detailed documents like contracts, change orders and meeting minutes with layout and formatting directly into Microsoft Word. CPLs leverage the native XML support of Proliance to incorporate enterprise project data stored in a central location, with a familiar, editable format.

PROJECT MANAGEMENT WORKFLOW AND SECURITY CONFIGURATION

A series of pre-defined workflows and document templates are provided with associated security roles and corresponding look-ups. This pre-defined configuration was developed from Meridian's deep project and program management expertise, as well as feedback from many customers who have already implemented Proliance. Standard configuration includes Security Roles, Security Categories, Document templates/sub-types, Standard Lookup lists, and over 150 preconfigured Register views.

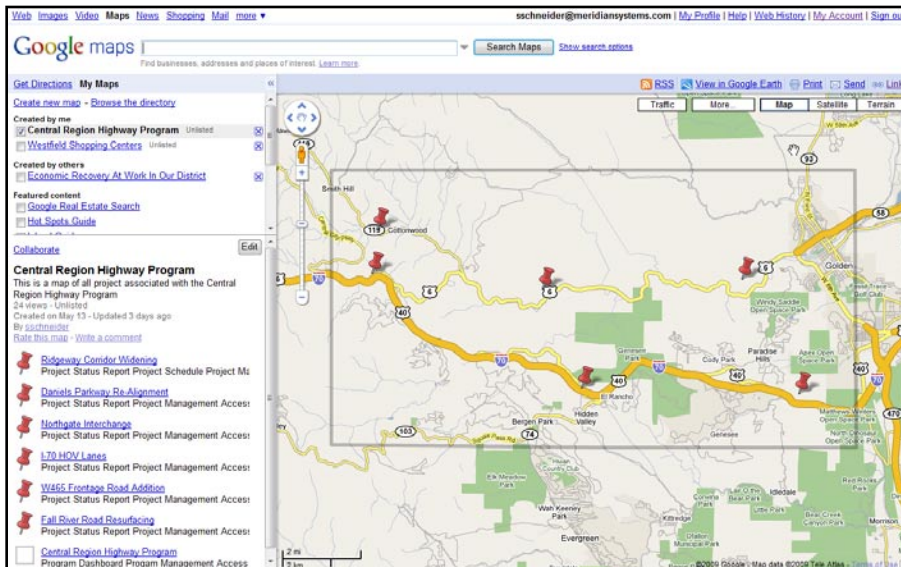
DESKTOP QUICK APPLICATIONS

Desktop Quick Applications are utilities that allow project teams to quickly enter or upload vast amounts of project data, like drawing files, in batches. Import utilities provide additional rapid data entry benefits. For example, you can consolidate the reporting and management of schedules across the enterprise with the Schedule Import utility which supports importing data from other popular scheduling applications into Proliance. Included is a Batch File Upload Utility, a Lookup Import Utility, and a Schedule Import Utility.

OWNERS, GOVERNMENT AGENCIES, AND CONTRACTORS WORKING ON STIMULUS-FUNDED PROGRAMS OR PROJECTS CAN LEVERAGE STANDARD DASHBOARDS AND REPORTS TO COMPLY WITH REPORTING REQUIREMENTS AND PROVIDE VISIBILITY AND ACCOUNTABILITY INTO THE EXPENDITURE OF TAXPAYER DOLLARS.

PROLIANCE TECHNOLOGY PLATFORM

By leveraging the rich web native .net platform of Proliance, easy project dashboards can be developed using common web applications like Google Maps and Google Earth. These dashboards can provide executives, project managers, or the public with quick access to information regarding publicly funded projects.



EASILY SHARE INFORMATION WITH THE PUBLIC BY INTEGRATING PROJECT DATA, INCLUDING BUDGET AND COST INFORMATION, WITH GOOGLE MAPS TO DISPLAY PROJECT LOCATION AND STATUS IN A CONVENIENT MAP DISPLAY.

Ultimately, the Proliance Government Starter Pack provides an easy response to the Recovery Act reporting requirements, increases time savings, individual efficiency and information reliability across all multiple projects.

For more information on the Proliance Government Starter Pack, visit our web site at www.meridiansystems.com or call (800) 850 2660.

Technical requirements and Dependencies

- › MICROSOFT .NET RUNTIME VERSION 2.0
- › MICROSOFT OFFICE 2003 OR 2007 (PROFESSIONAL)
- › MICROSOFT WEB SERVICES ENHANCEMENTS 2.0 SERVICE PACK 3
- › ABILITY TO MODIFY LOCAL .NET SECURITY POLICIES TO TRUST MERIDIAN ASSEMBLIES
- › MICROSOFT WINDOWS XP SP2 OR GREATER
- › VISUAL STUDIO TOOLS FOR OFFICE 2005 RUNTIME
- › VISUAL STUDIO TOOLS FOR OFFICE SE